

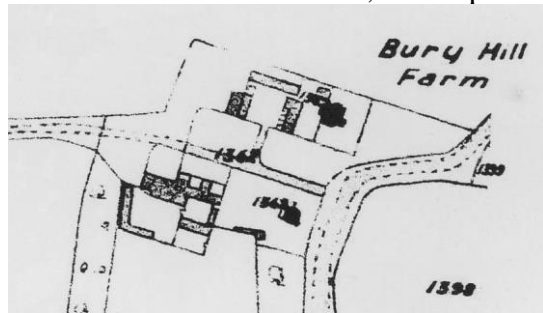
Bury Hill Home Farm

When the Bury Hill Estate was offered for sale in 1811 it was known as Berry Hill and comprised 1,983 acres of arable, meadow, pasture and woodland. According to the sales prospectus Berry Hill Farm accounted for the following:

		a	r	p
A10 Nower Hill	Arable	42	0	29
A11 Pond Field	Meadow	4	3	16
A12 Bushey Plat & Pond	Wood etc.	1	0	12
A13 Dockey Field	Arable	4	0	18
A14 Lower Barras	Arable	6	0	24
Shaws, round ditto	Wood	3	3	03
A15 Upper Barns	Arable	6	0	10
Hedgerows in ditto	Wood	1	2	00
A16 The Eleven acres	Arable	12	3	14
A17 The Ten Acres	Arable	10	1	33



The sale included 'A Farm House, and Dairy, etc., with Lofts and Chambers over the whole, and Cellars under the Building; in front of which is a Farm Yard, containing a Barn, Pigsties etc.: there is also, another Farm Yard, containing a Barn, Cow-house, and Cattle Stalls'.



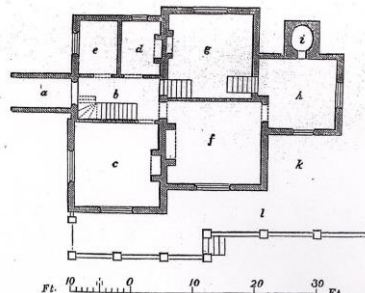
However, the map that accompanied the sale prospectus does not show any buildings where the Home Farm House is currently located. At that time the farm buildings were situated elsewhere, probably as part of the original Berry Hill House or as part of the estate alongside Milton Street.

The farmhouse, barns and yard certainly do appear on the 1838 Tithe Map of the Parish of Dorking (left).

The House was erected in 1831 or shortly before as the Bailiff's Cottage. The design was by John Perry, architect of Godalming, and a full description, detailed specification for its construction and cost details were included in J C Loudon's 'Encyclopaedia of Cottage, Farm and Villa Architecture, published in 1833, from which the following details have been taken.



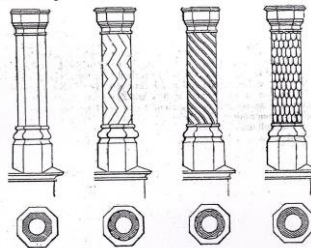
Bury Hill Home Farm House



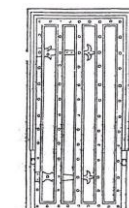
Ground floor Plan



Sketch of the Farm House



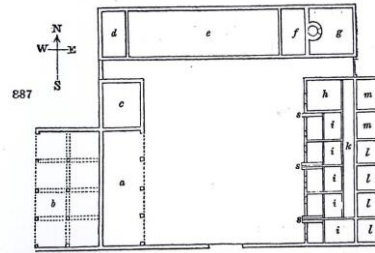
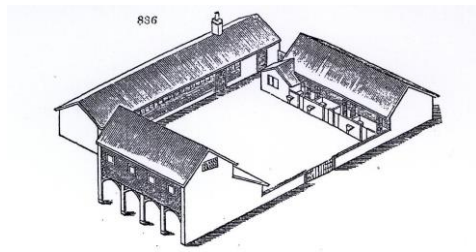
Chimney Designs



Front Door

In the mass of detail even the initials of the principal tradesman are provided: 'S.B.' Bricklayer; 'W.G.' Mason; 'R.S.' Carpenter & Joiner; 'W.B.' Plumber, Painter & Glazier.

Loudon's Encyclopaedia also included details of the 'farmery' that was built in the Old English Style a few yards to the north of the bailiff's house. The text explains that the design was also by John Perry and was primarily intended for 'dairy husbandry'



The Farmery Buildings

The accommodation provided for a cattle shed, wagon and implement house with granary over, and pigeon house over that, hay store, calf pens, cow house, slaughter house, swill-cisterns and tanks for holding liquid food, and bins for dry fob for pigs, piggeries, fowl houses.



This drawing is by Charles Duffield Harding, who was commissioned by Charles Barclay in the late 1830s to give his daughters art lessons and to illustrate scenes on the Bury Hill Estate¹. After the Estate was bought by the Barclay Family some of the outlying farms were sold but the Home Farm was retained and was detailed as Lot 4 in the sales prospectus when the whole estate was offered at auction on 23 July 1914.

At that time the farm comprised 79 acres and there was a photograph of the Farm House showing remarkable similarity to the drawing made almost 80 years earlier. The Lot also included a flint and tiled roof 'cottage or lodge' and a pair of brick and tiled cottages known as 'Milehouse Cottages' (Details at Annex A).



The property did not sell in 1914 (at which time it was tenanted by Mark Rowe with a lease for 12 years dated from 29 September 1910) but was offered again on 23 July 1952 when Home Farm was Lot 31 and included about 158 acres (Annex B). On this occasion the property was sold – for £4500 to the then occupant Mr K Wightman.

The rate of inflation during the 1960s and 1970s is indicated by the fact that when Home Farm was sold on in 1979 the asking price, including The Home Farmhouse, Stable House and what appears to be a new dwelling - Stone House (pictured below), was £300,000

¹ Duffield's diaries are held at the Courtauld Institute and include a reference to his work on Mr Barclay's drawings being completed on the 7th November 1839.



Home Farm House



Stable House



Stone House

The occupants of the Home Farm and its associated cottages can be identified from the 19th century census returns. This task has not been completed but the entries for the Home Farm Farmhouse are included in this folder.

The Coldharbour lane postcode RH4 3JG now includes Home Farm, Stable House, The Stone House and The Old Cartshed (plus 1 and 2 Brambledown Park Caravan Site)

Although many of the architectural features and fittings specified for the Home Farm farmhouse in 1830 have long since disappeared several remain.

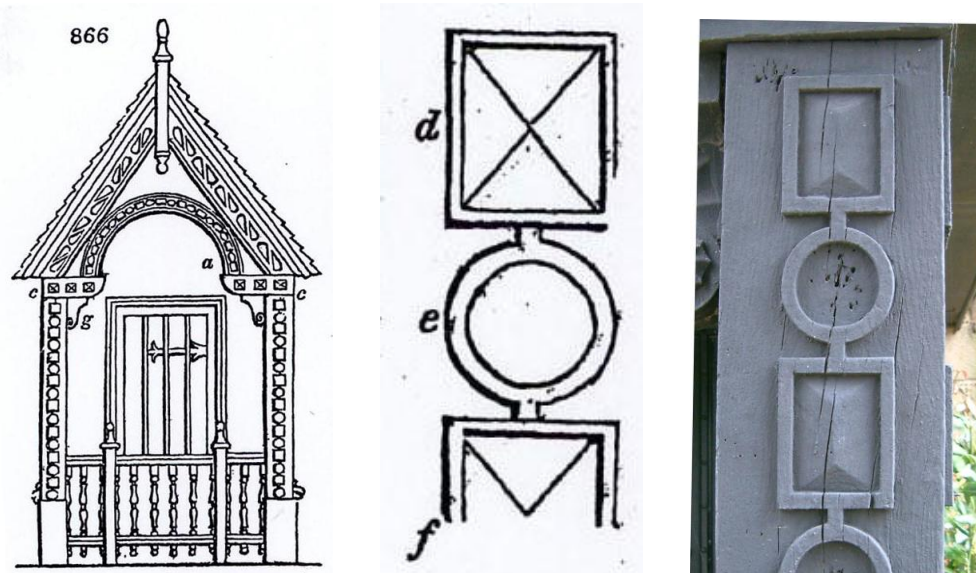


Figure 866 illustrates the front of the entrance porch and *d*, *e* and *f* are the ornamental designs that John Perry chose to decorate the outer sides of the corner posts. These survive today as shown.